



# Aussie Disposals Case Study





Aussie Disposals specialises in camping and outdoor equipment, work wear, clothing, ex-army surplus and hunting gear.

### **Brief**

Aussie Disposals, a leading outdoor and adventure retail chain, was seeking a cost-effective and timely store fitout solution.

Critical to the brief was the delivery of a unique look and feel within the store as well as the flexibility to suit Aussie Disposals' highly varied product merchandise and range.

Melbourne Office  
11 Dalmore Drive, Scoresby VIC 3179

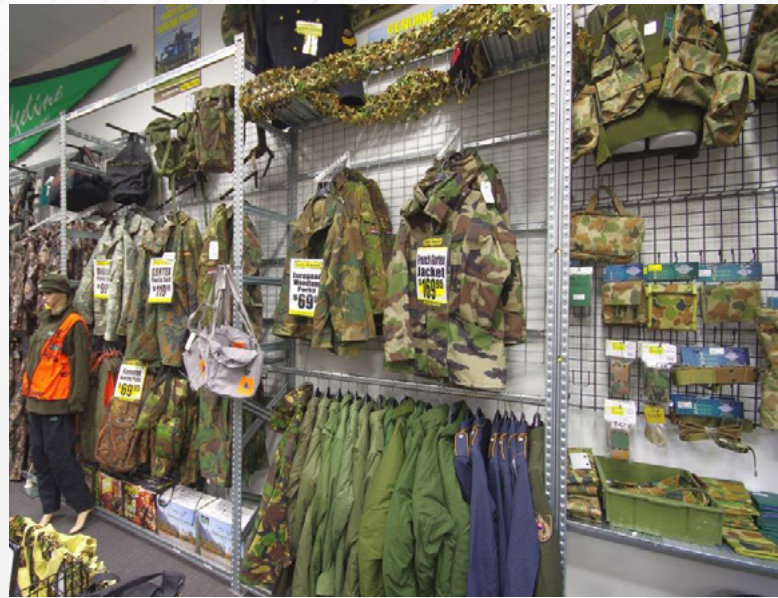
Sydney Office  
Level 6, 10 Herb Elliott Avenue, Sydney Olympic Park, NSW 2127

Brisbane Office  
4 Trade Street, Lytton QLD 4178

## Solution

The Sigma shelving system was supplied due to its rapid assembly for fast fit out completion, versatility in sizing, and a large range of accessories.

Working with the store development team, Bowen Storage designed custom shelving bay configurations for each individual merchandise range. The modular shelving system was also adapted to create changing rooms that aligned with the distinctive aesthetics of the new store fitout.



## Results

The results achieved are outstanding. In just two days the fitout was completed, enabling stores to begin trading earlier than normal. With minimal disruption to business and customers, Aussie Disposals was able to generate sales sooner.

Additionally, the new retail design fitout achieved a unique and distinctive look and feel, aligned to their brand image and identity.

